
Why we urgently need a new European Parliament

DIABETES RESOLUTION



**International
Diabetes Federation
Europe**



MMD
MEPs Mobilising for Diabetes

WHY WE URGENTLY NEED A NEW EUROPEAN PARLIAMENT DIABETES RESOLUTION:



International
Diabetes Federation
Europe



Nobody is immune to diabetes



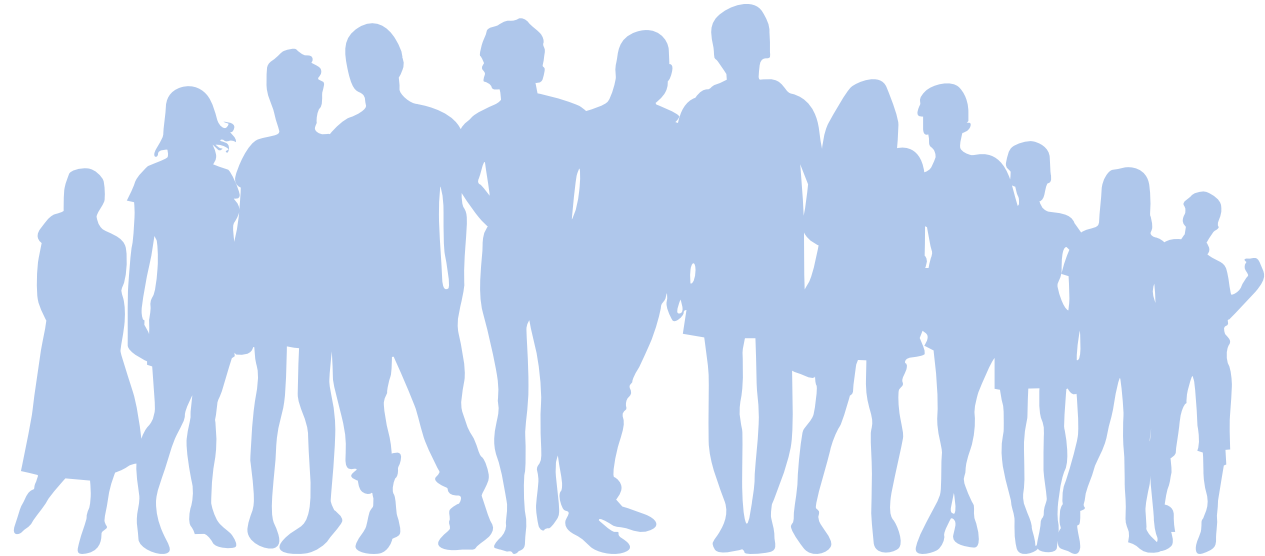
Diabetes care is a marker of the future resilience of national health systems



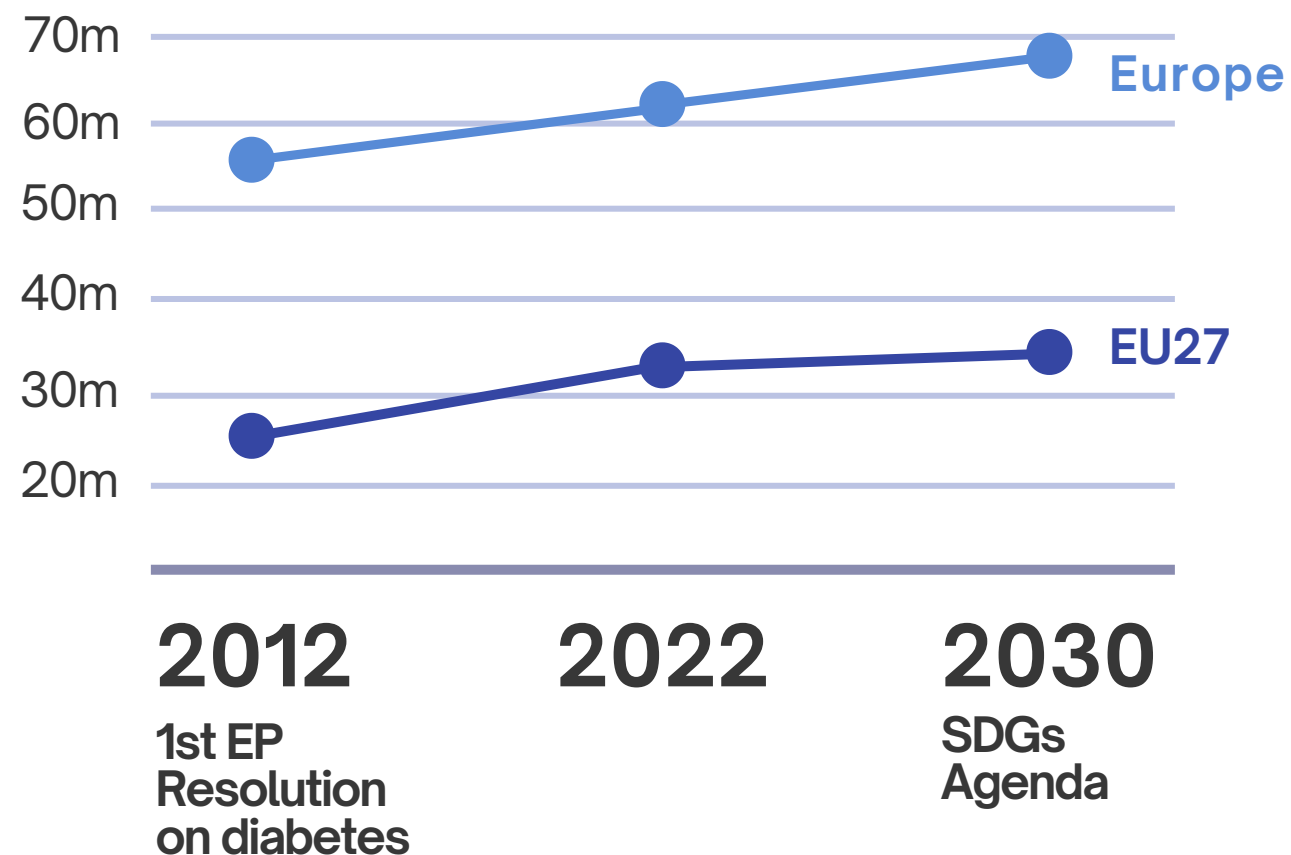
EU policy action lacks the required leadership

NOBODY IS IMMUNE TO DIABETES

It affects babies, children and adults across all socio-economic groups and geographies, and the situation is getting worse.



Number of people living with diabetes (PwD)



DIABETES:


LIFELONG DISEASE WITH NO CURE

 **1/3**
of PwD are **undiagnosed**

  **up to 1/2**
of PwD **do not achieve** optimal blood
glucose **targets**

ROOT CAUSE OF MANY OTHER NCDs

 **1/3** of PwD develop
CVDs


 Diabetes/+ hypertension cause
80% of end-stage **renal disease**

 **1/3** of PwD develop
diabetic retinopathy

 **€78 bn** **3/4** of diabetes **costs** result
from diabetes-related
complications

MORE MIGHT BE TO COME

 **COVID-19** increases
the risk of **developing**
diabetes

 **Diabetes** during **pregnancy** may
program the unborn child to be
more susceptible to **diabetes**

DIABETES CARE IS A MARKER OF THE FUTURE RESILIENCE OF NATIONAL HEALTH SYSTEMS

Effective diabetes prevention and management touch on all aspects of national health systems. They keep PwD and others away from the healthcare system, lower costs, improve resource utilisation and contribute to digitalisation, thereby shoring up resilience.

- 6

7

 Evaluation of interventions, pathways and treatment options


 Investment in innovation and effective interventions

 Focus on research

 Improved governance
- 4

 Integrated, patient-centred care framework, with clear and easy-to-follow pathways, and management guidelines

 Self-management education, digital & health literacy, peer support


 Uninterrupted access to medicines, technologies and care. Innovative tools, approaches, medicines


 Engagement and empowerment of all stakeholders




- 1


2


 Raising awareness


 Improving population health through broad use of technology, innovation and health and non-health data

 Strengthening primary and community care
- 2

4

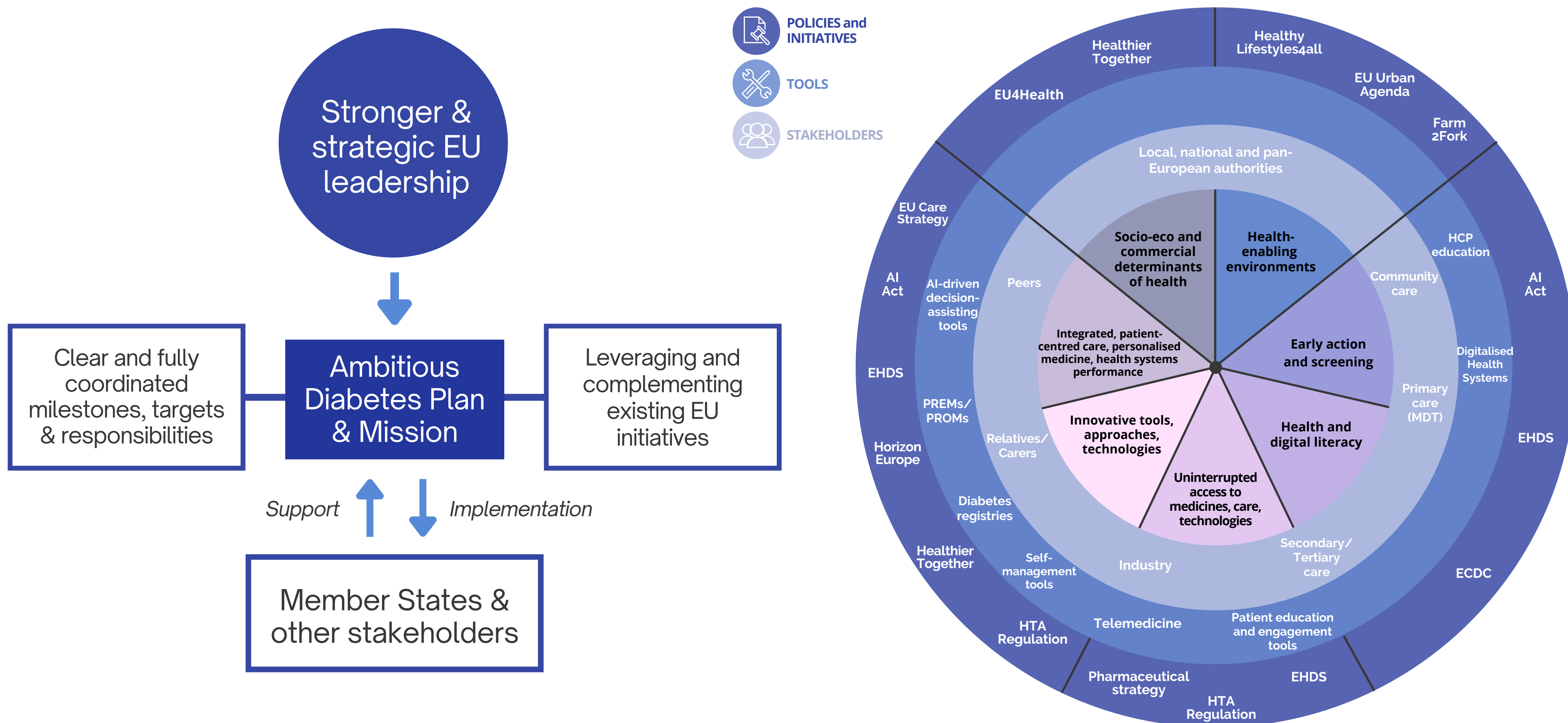
 Early action (lifestyle intervention, medication, referrals)

 Adequate HCP training and development

 Screening for all types of diabetes and complications

EU POLICY ACTION LACKS THE REQUIRED LEADERSHIP

Turning the tide requires concerted and coordinated EU leadership, an ambitious Diabetes Plan and Mission, with an implementation roadmap, leveraging EU initiatives, and working in close collaboration with Member States and other stakeholders.



1922

100 years after the discovery of insulin...

2012

... 10 years after the first European Parliament Resolution on diabetes ...

NOW

... let's stop ignoring the 170,000 children and the 32m adults living with diabetes in the European Union and the millions more on their way to developing it.



Let's re-design health systems, which build on the effective prevention and management of diabetes and other chronic diseases to guarantee their own resilience, improve EU citizens' quality of life and reduce inequalities.



International
Diabetes Federation
Europe



MMD
MEPs Mobilising for Diabetes

The diabetes community is united in its support of the motion for a new Diabetes Resolution



European
Diabetes Forum



Foundation of European Nurses in Diabetes



International
Diabetes Federation
Europe



International Society for Pediatric
and Adolescent Diabetes



primary care diabetes europe



For more information, contact:

Alina Chebes
IDF Europe Policy & Advocacy Coordinator
alina.chebes@idf-europe.org
+32 456 14 87 17

Visit our website:

www.mepinterestgroupdiabetes.eu



International
Diabetes Federation
Europe

